



Sectional Doors Fire Rated Doors
Fire-rated Industrial Doors
Special Doors Ballistic Doors Acoustic Doors
Hangar Doors Garage Doors
Explosion-proof Doors Industrial Fire Doors
Fire Doors **Sectional Doors**
Fire-rated Industrial Doors Special Doors



door to trust

ABOUT US

Since its establishment in 1992, Dimak Door Systems has been maintaining its steady growth in line with unconditional customer satisfaction. As an engineering company, Dimak continues its production activities in two separate factories equipped with modern machinery, spanning a total area of 17,000 m², with the construction of its new facility completed in 2024.

By providing installation and service support to its customers through more than 200 dealers in 70 provinces, Dimak continues its steady growth in the domestic market while also positioning itself as a global brand with its export-oriented production, particularly to Western and Northern European countries.

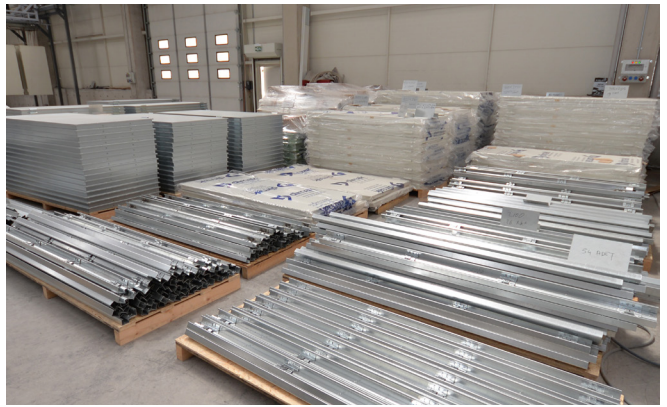
While Dimak maintains its production of a wide range of products in door systems with the understanding of “producing high quality on time”, it also continues its after-sales services in line with the goal of high customer satisfaction.

PRODUCT RANGE

- » Industrial (Sectional) Doors
 - » Sectional Overhead Doors
 - » Explosion Proof Doors
 - » Acoustic Insulated Doors Suitable for Faraday Cage
 - » Burglar Proof Doors
 - » Fire Resistant Doors
 - » Atex Doors
 - » Acoustic Doors
 - » Sliding Column System Doors
 - » Oversized Doors (9m x 14m etc.)
- » Fire Rated Steel Doors
 - » Double Leaf Doors (90 Minute)
 - » Single Leaf Doors (90 Minute)
 - » Single Leaf Doors (120 Minute)
- » Steel Security Doors
- » Fire Resistant Shaft Doors
- » Stainless Steel Doors
- » Ballistic Doors
- » Garage Doors
- » Steel Shutter Systems
- » Hangar Doors (F16/F35 Combat Aircrafts)

PRODUCTION FACILITIES





WHY DiMAK?



Reliable Partner

Keeping always his word and building trust with partners



Timing

The best timing in production, assembly, service when bidding



Flexible Production

Solutions for every project with its flexible production structure



Solution Oriented

Approach to create a "solution" rather than a "problem"



R&D Engineering

Experienced engineers to develop new products



Customer Satisfaction

High customer satisfaction in sales and after sales services



Innovative Technology

Latest technology and application techniques for production



Project Management

Capacity to finalize large-scale projects

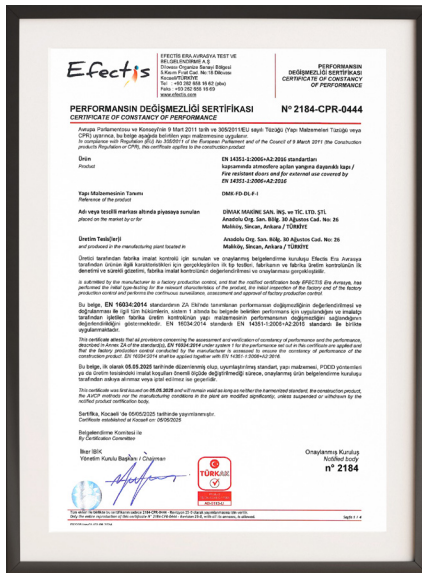
CERTIFICATES

- » CE Certification
- » FB6 Ballistic Test Document
- » ISO 9001-2015
- » TSE Relevance Certification
- » TSE Service Qualification
- » GHOST Kazakhstan
- » Qatar Compliance
- » Fire Rated Steel Door Certificates
 - » Fire Resistance
 - EN 1634-1 / EI60, EI90, E120**
 - » Smoke Resistance Certificate





Single Leaf Fire Doors CE



Double Leaf Fire Doors CE



Industrial Doors CE



Single Leaf 90 Minutes



Double Leaf 90 Minutes



Single Leaf 120 Minutes



TS EN ISO 9001:2015



TSE Certificate



Service Qualification

FIRE RATED STEEL DOOR

EN 1634-1
Certification

CE
Certification

90 Minute
Fire Resistance

120 Minute
Fire Resistance

Customer
Specific Sizes

Quick Delivery in
Standard Sizes

Reversible
Door Option

Rigidity

Unique sectional design makes the frame and leaf very rigid

Modular Design

Door frames are produced in 3 disassembled pieces

Fire Seals

High-quality intumescent seals on the frame

Air and Sound Insulation

On request, air and sound insulating seals provided

Optional Hardware

Supporting plates are present inside the door for installation of optional hardware

Strength

Door leaf has 63 mm thickness and produced from 0.80 mm thick galvanised steel.

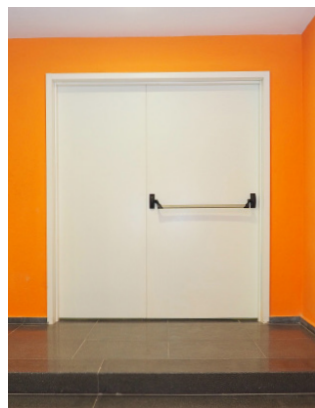
Safety Bolts

There are two safety bolts per leaf on the hinge side

Weather Seal Slots

Weather seal slots are present on the door frame





INDUSTRIAL DOOR

Dimak Brand
Panel

Powder Coated
in Any RAL Color

Galvanized Rail
and Hardware

Insulated
Panel

Motor
Options

Certified

Manual Usage
Possibility

Panels

- » Dimak Panel
- » 62 mm Panel Thickness
- » Insulated Panel
- » Painted in Any RAL Color
- » Two Sides 0.50 mm Steel Galvanized Sheet
- » Galvanized Rail and Hardware

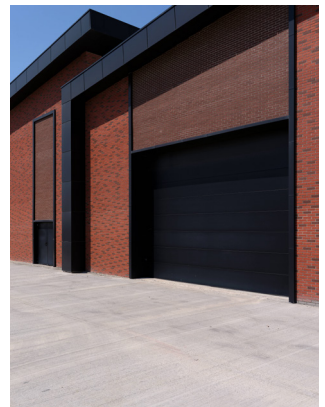
Motors

- » High Efficiency Motor
- » Certified
- » Different Power Alternatives
- » Manual Usage Possibility
- » DIN EN ISO 9001 and 14001
- » Compact Design
- » Quiet Operation

Accessories

- » Safety Photocell*
 - » Metal Mass Detector*
 - » Flicker Lamp*
 - » Button / Remote Control*
 - » Cable Break Safety
 - » Spring Break Safety**
 - » Security and Command System Alternatives
- *Optional / **Manual Doors





STEEL SECURITY DOOR



Scratch Resistant Laminate

Inside and outside door surface is 8 mm MDF covered with HQ scratch resistant laminate (CPL).



Supporting Security Plates

Supporting security plates are present inside the door leaves at the points where locks are installed.



Compatible Hardware Color

Hardware color outside and inside is compatible with the laminate used on the door skin.



Corrosion Resistance

Galvanized steel is used in production of door frames and door leaves to ensure high corrosion resistance.



High Rigidity

Due to its unique sectional design, the door frame and door leaf of steel security door are very rigid.



Heavy-Duty Hinges

The steel security entrance doors are equipped with 3 heavy-duty hinges.



High Security Locks

Both locks are pivotable and main lock has a steel latch and 3 steel chrome plated deadbolts (three throws).



Specific Size

The steel security entrance doors can be produced in both standard and customer-specific sizes.



Modular Design

The steel security entrance door frames are produced in 3 disassembled pieces.



Safety Bolts

There are two safety bolts per leaf on the hinge side of steel security entrance doors.



Grid Construction

Grid construction of 5 rigid profiles inside the leaf gives the leaf very high rigidity.



Special Packaging

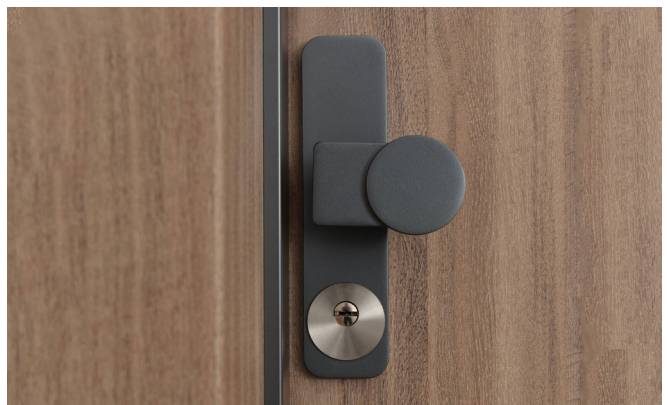
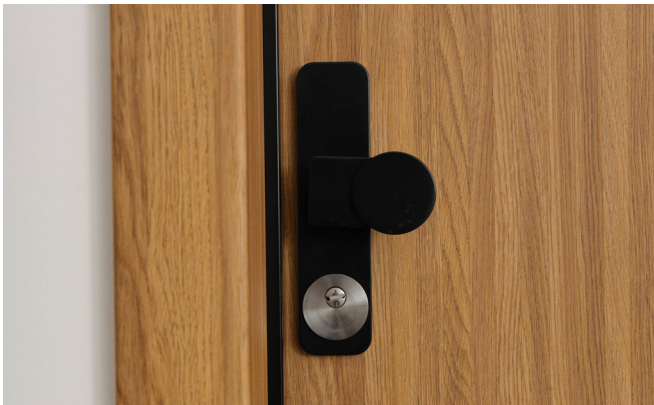
All steel security entrance door leaves and frames are wrapped in nylon packaging of high thickness.

Harmony of Metal and Wood

PURA-01



PURA-02



FIRE RATED SHAFT DOOR

EN 1634-1
Certification

🔥 Certification

Shaft doors have been tested according to EN 1634-1 standards.

🔥 Fire Seals

A high-quality thermo expanding seal is used on the frame.

🔥 Rigidity

The shaft door frame and door leaf are very rigid due to design.

High-Quality
Fire Seals

Rigidity

Modular
Design

🔥 Lock System

Shaft Doors consist of a latch lock that can be opened with an allen key.

🔥 Electrostatic Powder Coating

Shaft doors are painted with at least 70 micron thick electrostatic powder.

🔥 Modular Design

Assembling the frame parts to each other is very practical.



BLAST PROOF DOOR

EXR4
Certification

Single / Double
Leaf Options

Multi-Point
Locking System

Optional Access
Control

Certification

Tested against explosive pressures according to EXR4 classification.

Multi-Point Locking System

6 or 9-point locking mechanism ensures superior security.

Optional Access Control

Compatible with magnetic locks, panic bars, or motorized systems.

Reinforced Steel Structure

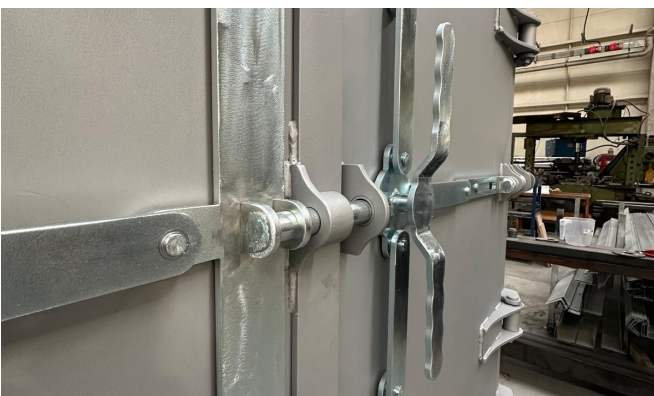
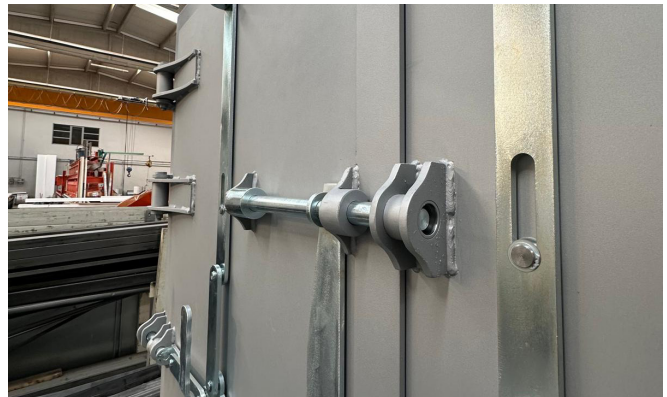
Manufactured with 4 mm steel cladding and box profiles for maximum strength.

Heavy-Duty Hinges

Specially designed blast-rated hinges provide long service life.

Air, Dust and Sound Sealing

Optional sealing systems for enhanced protection and comfort.



BALLISTIC DOOR

EN 1522
Standard

FB6 Ballistic
Test Report

Independent
Laboratory
Tests

Customer
Specific Sizes

🔥 Certification

Ballistic doors have FB6 ballistic resistance certification.

🔥 High Ballistic Resistance

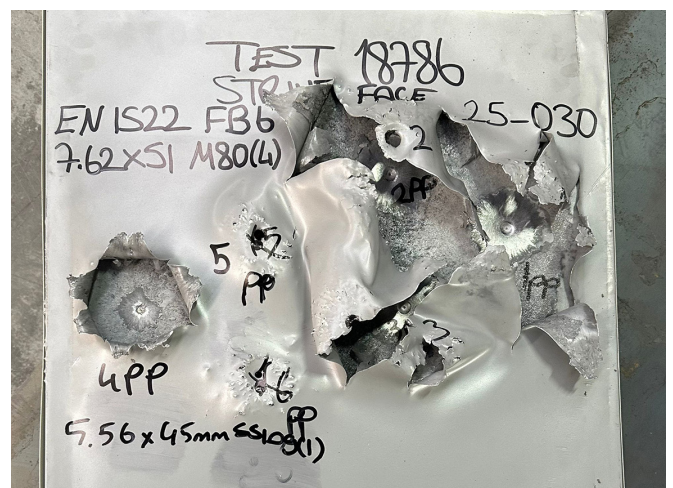
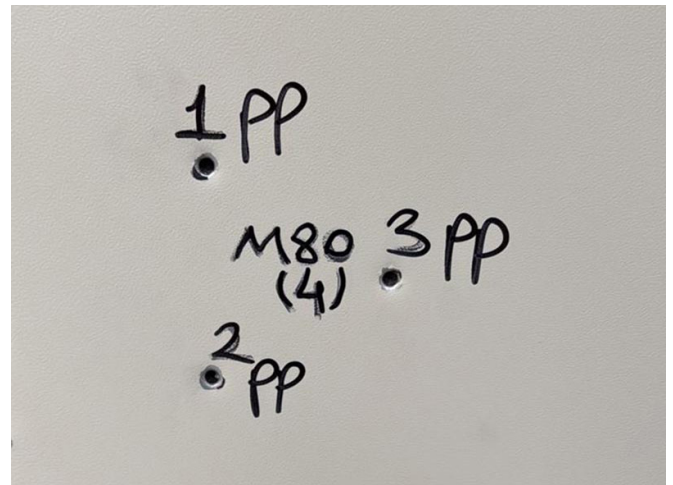
Manufactured using a reinforced internal construction and armored sheet steel.

🔥 Accessories

Ballistic door accessories are designed to be bulletproof.

🔥 Locking Mechanism

Provides maximum security using a locking mechanism and a safety pin.



DOMESTIC PROJECTS

Presidential Congress and Cultural Center-Ankara | Fire Rated Acoustic Doors



Mercedes-Benz Turkey Factory-Aksaray | Fire Doors



DOMESTIC PROJECTS

Holiday Inn Express-Ankara | Fire Doors & Shaft Doors



Sumitomo-Ankara | Fire Doors



DOMESTIC PROJECTS

High Speed Train Station-Ankara | Fire Doors



The Constitutional Court of Turkey-Ankara | Fire Doors



DOMESTIC PROJECTS

Atakule-Ankara | Fire Doors & Sectional Doors



Hidromek Factory-Ankara | Fire Doors & Sectional Doors



DOMESTIC PROJECTS

Şişecam Factory-Kırklareli | Fire Doors



Şişecam Factory-Mersin | Fire Doors



DOMESTIC PROJECTS

Kuzu Effect | Garage & Sectional Doors



Ankara Trade Center | Garage Doors



Nevaport Incek | Fire Doors



Grand Mercure | Fire Doors & Shaft Doors



Nokta | Fire Doors & Sectional Doors



TED Ankara College | Sectional Doors



DOMESTIC PROJECTS

Cepa Houses | Fire Doors



Koç Towers | Fire Doors



AnkaMall AVM | Fire Doors



NEV 201 | Fire Doors



CES Composite | Fire Doors



Kalyon PV | Fire Doors & Sectional Doors



DOMESTIC PROJECTS

Mosaic Park | Fire Doors



Yıldız Tower | Fire Doors



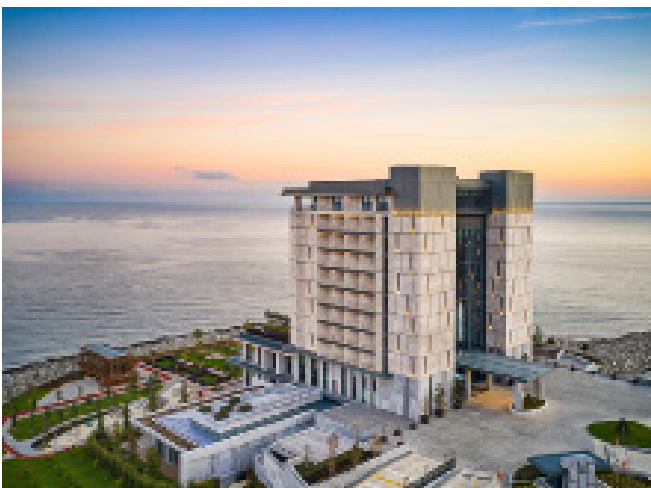
Highlife Office | Garage Doors



Çetin Dam | Fire Doors



Ricosto Hotel | Sectional Doors



DSİ | Fire Doors



DOMESTIC PROJECTS

GTC Foreign Trade | Sectional Doors



Havelсан HTR | Sectional Doors



Güven Hospital | Garage Doors



Bilkent Center | Fire Doors



Ankara Palas | Fire Doors

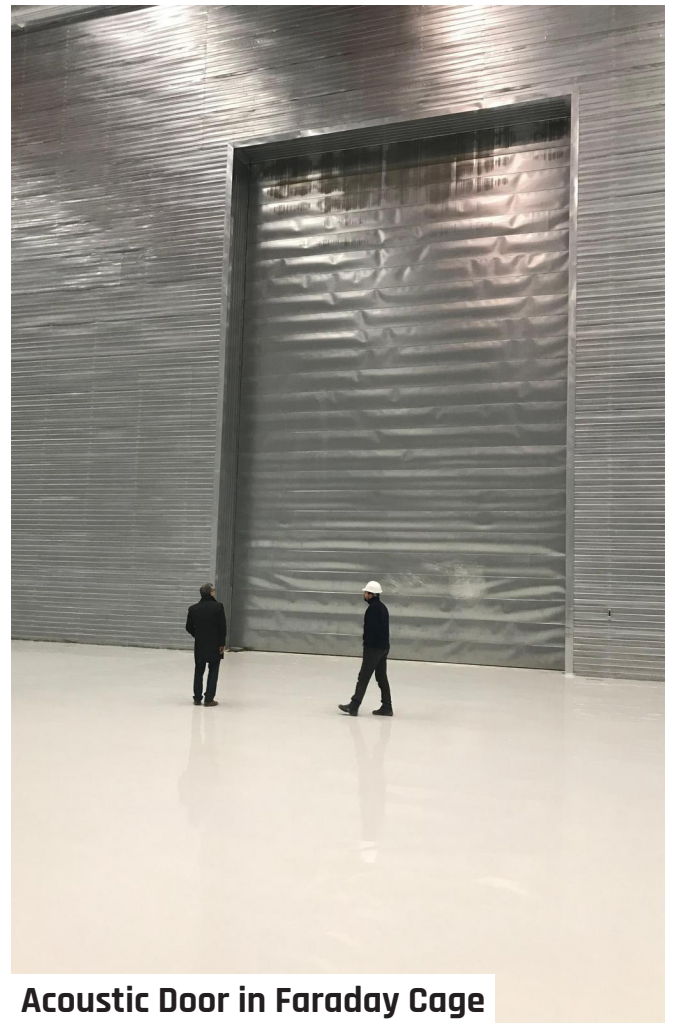


Tübitak SAGE | Fire Doors



DOMESTIC PROJECTS

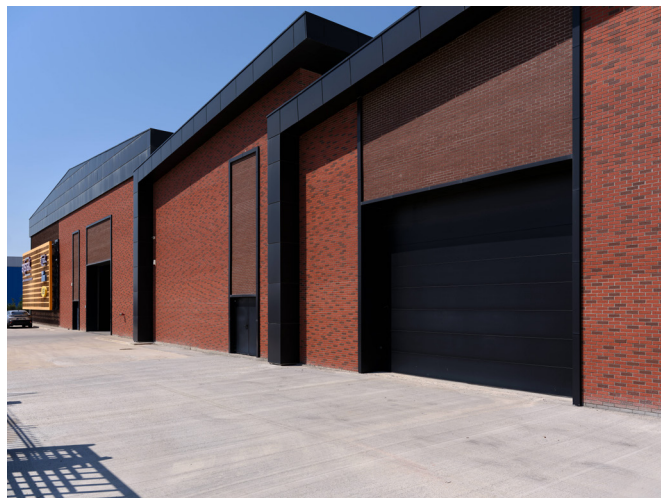
Large Facilities | Sectional Doors



Acoustic Door in Faraday Cage

DOMESTIC PROJECTS

Large Facilities | Sectional Doors



INTERNATIONAL PROJECTS

AFC Ajax Amsterdam Arena / Holland | Fire Rated Sectional Doors



Municipal Theatre Amsterdam / Holland | Acoustic Doors



INTERNATIONAL PROJECTS

The Ziggo Dome Concert Hall / Amsterdam | Acoustic Doors



The Royal Arena / Copenhagen | Fire Rated Acoustic Doors



INTERNATIONAL PROJECTS

Central Bank / Azerbaijan | Fire Doors & Blast Proof Doors & Ballistic Doors



State Customs Committee Building / Azerbaijan | Fire Doors



INTERNATIONAL PROJECTS

Alliance Privilege Batumi / Georgia | Fire Doors



Anagi Vashlijvari / Georgia | Fire Doors



INTERNATIONAL PROJECTS

International Airport / Malta | Fire Doors



Zone R05 Residences / Egypt | Fire Doors



INTERNATIONAL PROJECTS

Benghazi State Library / Libya | Fire Doors



Sky Zone / Mongolia | Fire Doors



INTERNATIONAL PROJECTS

Royal Dutch Army-Gilze Rijen / Holland | Burglar Proof Hangar Doors



Royal Dutch Army-Volkel F16 / Holland | Burglar Proof Hangar Doors



INTERNATIONAL PROJECTS

Pas Reform / Holland | Special Doors



Ter Hoeven / Holland | Special Doors



INTERNATIONAL PROJECTS

De Vorstin Concert Hall / Holland | Special Doors



Bicycle Pavilion / Holland | Sectional Sliding Doors



Teahouse-Vreeland / Holland | Sliding Doors



INTERNATIONAL PROJECTS

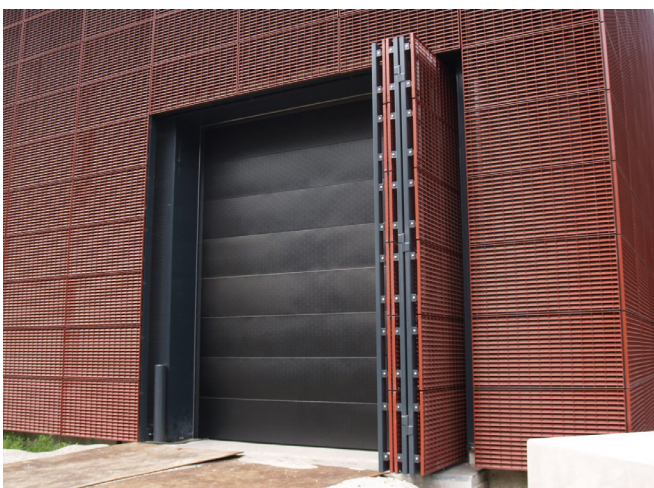
Theatre Patronaat / Holland | Acoustic Doors



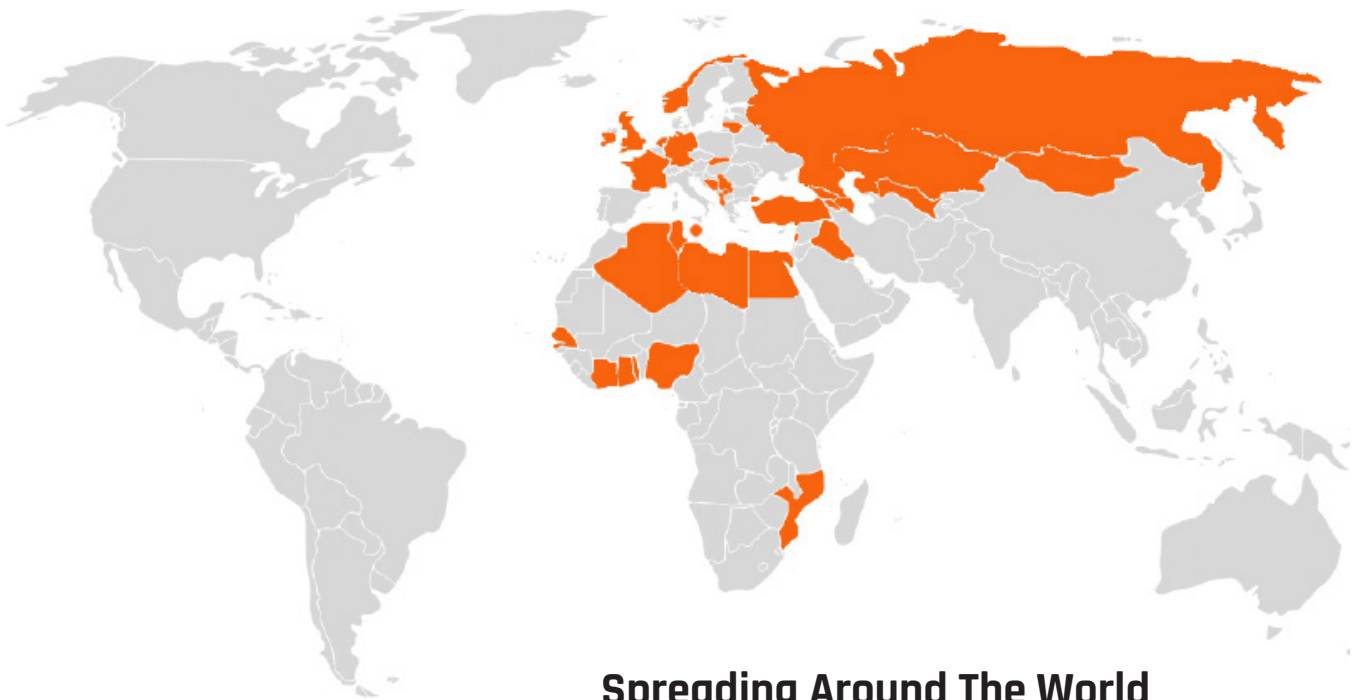
Vincent van Gogh Institute / Holland | Garage Doors



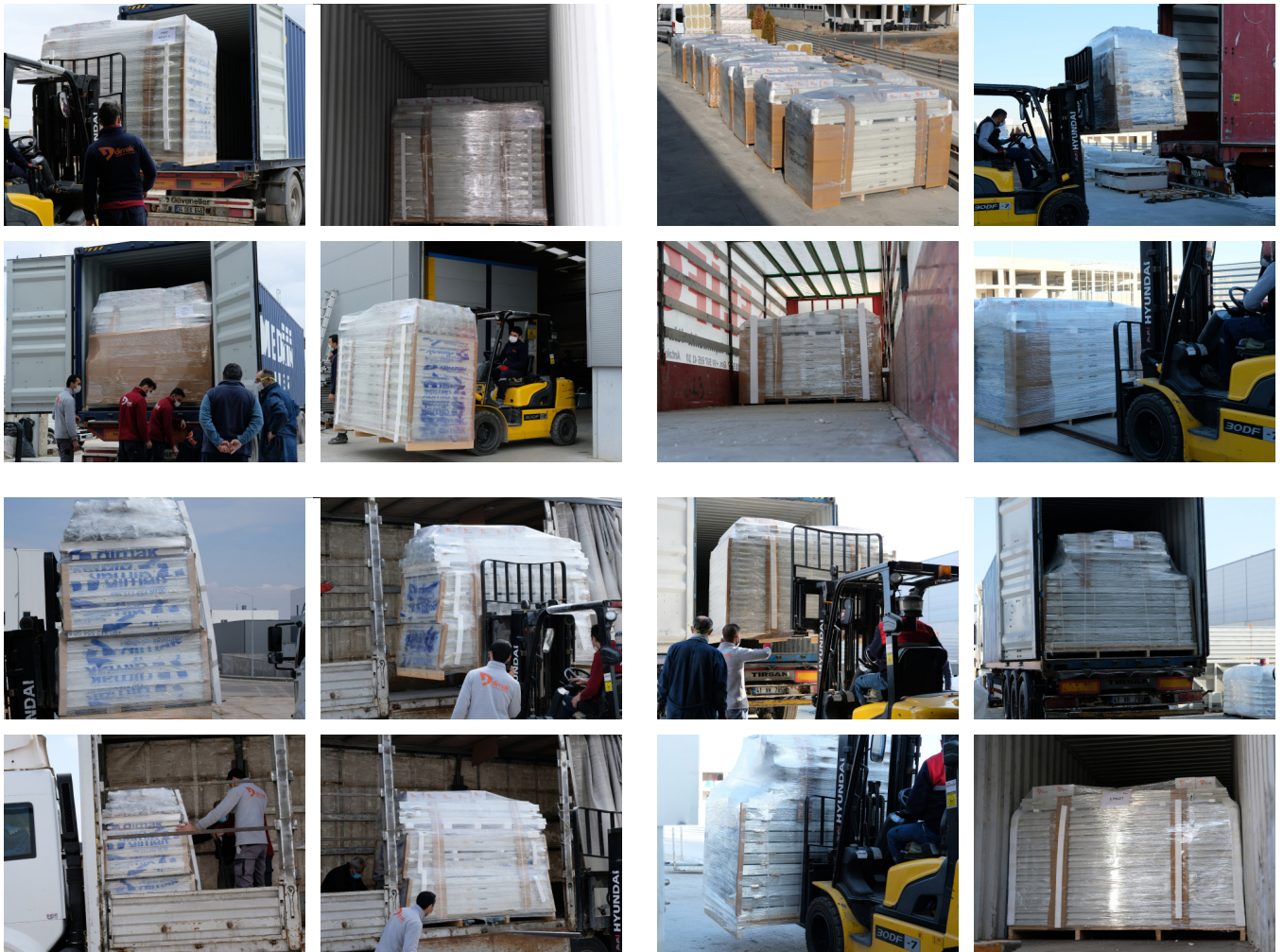
Heat Station / Holland | Industrial Doors



EXPANDING GLOBALLY



Spreading Around The World



DOMESTIC PROJECTS

- » Aselsan
- » Rönesans Holding
- » Hidromek
- » TAİ - TUSAŞ
- » Cumhurbaşkanlığı Külliyesi
- » MİT
- » Kara Kuvvetleri Komutanlığı
- » HAVELSAN
- » TÜBİTAK
- » Ankara Ticaret Merkezi
- » Protokol Binası
- » ODTÜ
- » Hacettepe Üniversitesi
- » Ankara Üniversitesi
- » Çankaya Üniversitesi
- » YHT Garı
- » T.K.İ.
- » Soma Termik Santrali
- » DSİ Gn. Md.
- » Sayıştay
- » Çalışma Bakanlığı
- » Dışişleri Bakanlığı
- » BMC Tank Palet Fabrikası
- » Hazine Müsteşarlığı
- » Siemens
- » Başkent Ray
- » Sınav Koleji
- » Doğuş Yayın Grubu
- » Migros Türk T.A.Ş.
- » Yapı kredi Koray
- » Termikel
- » Gimat Gross
- » Bayındır Hastanesi
- » Treysan
- » MBD İnşaat
- » Doğuş Otomotiv
- » Mengerler Tic. Türk A.Ş.
- » ASO
- » Erkunt Traktör
- » Yüksel İnşaat
- » Tepe Prefabrik
- » Paysa Prefabrik
- » Tepe İnşaat
- » KL Yapı
- » Kolin İnşaat
- » Ankara Palas
- » AKO A.Ş.
- » Yenigün İnşaat
- » Bakü-Tiflis-Ceyhan Boru H.
- » Gen İlaç
- » TOBB Okulları
- » Cepa Evleri
- » Koç Kuleleri
- » Yıldız Kule
- » Kuzu Effect
- » Mercedes Otobüs Fabrikası
- » Nesibe Aydın Koleji
- » Zafer İnşaat
- » Ulusoy Elektrik
- » Eberk Makine
- » Nero Endüstri
- » Astor
- » TÜRMO
- » Temsa A.Ş.
- » Best Trafo
- » Hacıbaba
- » Tepe Mesa Park Mozaik
- » Siirt Çetin Barajı
- » Ricosto Otel

INTERNATIONAL PROJECTS

- » The Ziggo Dome Concert Hall / Amsterdam
- » The Royal Arena / Copenhagen, Holland
- » AFC Ajax Amsterdam Arena
- » Vincent van Gogh Institute / Holland
- » Municipal Theatre Amsterdam
- » Dutch National Army Museum
- » Bicycle Pavilion / Holland
- » Theatre Patronaat / Holland
- » Teahouse Vreeland / Holland
- » Heat Station / Holland
- » Royal Dutch Army-Gilze Rijen / Holland
- » Royal Dutch Army-Volkel F16 / Holland
- » Stadsschouwburg Cultural Center / Amsterdam
- » Orpheus Theater Apeldoorn / Holland
- » Ter Hoeven / Holland
- » De Vorstin Concert Hall / Holland
- » Grand Poitiers Art Gallery / France
- » Google / Germany
- » Audi / Germany
- » Royal Dutch Army
- » French Army
- » American Army
- » Norwegian Army
- » Pas Reform / Holland



Phone: +90 312 554 50 50 - WhatsApp: +90 312 554 50 50

Malıköy Anadolu O.S.B. 30 Ağustos Cad. No: 26
Sincan Ankara, TÜRKİYE

dimak@dimak.com.tr

www.dimak.com.tr



dimakdoor